

rime.

COLD ROOM HINGED & SLIDING DOOR

FOR CHILLER AND FREEZER



ENGINEERED TO ENDURE
MANUFACTURED FOR SUCCESS

www.rimegroup.com

OVERVIEW

About rime Group

rime is a dynamic and innovative refrigeration company that manufactures state-of-the-art refrigeration products and provides turnkey solutions for commercial and industrial applications. We have over 20 years of expertise, and with a relentless commitment to excellence and a passion for innovation, we have emerged as a leading player in the Middle Eastern and African HVAC and refrigeration Industry.

Our Mission

We strive to deliver high-quality, cost-effective refrigeration solutions with a focus on advanced manufacturing and assembly. Our goal is to provide superior products and exceptional service, that ensures a seamless customer experience and ongoing support.

Our Vision

To lead the HVAC and Refrigeration industry from the GCC to the global stage, setting the benchmark for cost-effective and innovative solutions. Through advanced manufacturing and assembly practices, we strive to pioneer cutting-edge technologies that optimize energy efficiency, minimize environmental impact, and make a significant, positive difference worldwide.

Core Values

Responsiveness: We value responsiveness in our interactions with clients, partners, and team members. We prioritize open communication and timely actions to address their needs efficiently.

Integrity: It is at the core of our business. We uphold ethical practices, transparency, and honesty in all our endeavors, building trust and long-lasting relationships with our stakeholders.

Mindfulness: Extends to our workplace culture. We are committed to fostering a supportive and inclusive environment where employees' well-being and personal growth are prioritized, ensuring a positive and collaborative work atmosphere.

Empowerment: We believe in empowering our team members to foster creativity, growth, and professional development. We encourage collaboration and foster an environment where everyone's ideas and contributions are valued

rime. Cold Room Doors

rime offers walk-in freezer doors in two styles: Sliding and Hinged. Our doors are energy efficient and have strong insulation properties upon closure. With various dimensions and thicknesses available, the doors are quick and easy to install with low maintenance. Made with advanced machinery and state-of-the-art technology, it ensures seamless integration and exceptional performance.

CONTENT

01

Features & Advantages

02

Nomenclature | Product Selection Guide

03 Hinged Door

04 Technical Specifications | Accessories

05 Selection Chart

06 General Fixing Details

07 Sliding Door

09 Technical Specifications | Accessories

10 Selection Chart

11 General Fixing Details

12

Customized Door Options

Colors | Tailored Solutions

14

Quality, Delivery, Installation & Maintenance

Warehouse | Assembly Line | Market Presence

Contact

For inquiries, consultations, or to learn more about our innovative refrigeration solutions, please get in touch with us:
sales@rimegroup.com

For customer support email us:
support@rimegroup.com

Hinged & Sliding Door Features & Advantages

KEY FEATURES

- 70 – 100 – 120 mm thickness
- Foamed-in-place polyurethane insulation of 40 kg/m³ density
- Rounding gasket to seal the contact points between the door leaf and the frame
- Unique 2-component gasket with high flexibility suitable for Low temperatures
- Thermal element around the door for cold storage below zero to prevent the gasket from freezing
- The cover of the door is made of pre-painted galvanized sheet. It is Equipped with a switch lock with safety mode to open from the inside
- Complete sealing of the door in all parts
- 1st grade lock and hinge
- Strong and shock-resistant frame
- Thermal break
- High resistance frame
- PVC coating of the wall after cutting to protect the polyurethane foam
- Use of PVC base to install a gasket on the door to prevent cold conduction better
- Use of PVC and aluminum in the frame for cold insulation
- Sealing gasket between the frame and the sandwich panel of the structure
- The door is manufactured using fixtures and undergoes testing after production.

SPECIAL FEATURES

- Replaceable gasket base
- Numbering of parts and accessories to provide after-sales service
- Using a plastic bead for more cold insulation inside the cold room to connect the frame to the wall
- Double frame with a heating element channel
- Easy and fast adjustment without disassembly

OPTIONAL FEATURES

- The possibility of placing the element in the frame (in addition to the door gasket)
- The ability to place a sliding door rail cover
- It is possible to order the door with colored sheets and stainless steel 304 and 316
- Including a viewing window as part of the production process is possible.

ADVANTAGES

- **Corrosion Resistance:** Our doors resist corrosion, even in aggressive environments depending on the finish.
- **Easy Installation:** They offer quick and easy installation with low maintenance requirements as they come pre-assembled.
- **High Tightness and Durability:** Our doors provide high tightness and durability, ensuring long-lasting performance.
- **Convenient Access:** They offer convenient access to the guide during installation, adjustment, or repair.
- **Versatility:** Our doors are adaptable to any thickness and market.
- **Food-Safe:** They are suitable for contact with food, meeting hygiene standards.
- **Strength:** Our doors feature strong and durable mechanical elements.
- **Optimal Functionality:** They provide optimal functional, climatic, hygienic, and sanitary qualities.
- **Precision Adjustment:** These doors can be precisely adjusted with 4 points.
- **No Auxiliary Structure Required:** They do not require an auxiliary structure for installation.
- **Self-Supporting Frame:** The self-supporting frame is adaptable to any thickness.

COLD ROOM DOOR NOMENCLATURE

COLD ROOM DOOR H R - F7 - 3S - 2G E 110x200

NAME
rime Door Model

HINGED / SLIDE
Door type
H: hinged doors
S: Slide doors

LEFT / RIGHT OPENING (#L / #R)
The direction to which the door opens:
L: Left opening
R: Right opening

THICKNESS (F#)
Choose the thickness of the door is based on the temperature it will work under:
7 cm suitable for higher temperatures (0°C & above)
10 cm more suited for middle range temperatures (0°C ~ -20°C)
12 cm more suitable for lower temperatures (-20°C ~ -40°C)

DIMENSIONS (WIDTH CM*HEIGHT CM)
The dimensions of our doors are defined by the measurement of each door's free passage when open (according to table 1)

ELEMENTS
E: ELEMENT PROVIDED
N: NO ELEMENTS INCLUDED
Based on the conditions that the door will be in, you can choose whether your door is equipped with a heating element or not.

GASKET (#G)
Number of gaskets:
1G: one gasket
2G: two gasket

FRAME (#S)
Number of sides that the frame will cover:
3S: covers 3 sides: Left, Right and above
4S: Covers all 4 sides: Left, right, above and below

PRODUCT SELECTION GUIDE

HINGED DOOR

Door model	Left/Right Opening	Thickness Profile (cm)	3 or 4 Side	1 or 2 Gasket	Element No element	Dimensions W*H
Hinged Cold Room Door	<input checked="" type="radio"/> L	<input type="radio"/> 7 cm	<input type="radio"/> 3S	<input type="radio"/> 1G	<input type="radio"/> E <input type="radio"/> N	<input type="radio"/> 90*180 <input type="radio"/> 95*190
	<input type="radio"/> R	<input checked="" type="radio"/> 10 cm	<input checked="" type="radio"/> 4S	<input checked="" type="radio"/> 2G	E	<input checked="" type="radio"/> 110*200
		<input type="radio"/> 12 cm				<input type="radio"/> 120*220

H L - F10 - 4S - 2G E 110x200

Nomenclature Example for Hinged Doors

SLIDING DOOR

Door model	Left/Right Opening	Thickness Profile (cm)	3 Side	1 or 2 Gasket	Element No element	Dimensions W*H
Slide Cold Room Door	<input type="radio"/> L	<input checked="" type="radio"/> 7 cm	3S	<input checked="" type="radio"/> 1G	<input checked="" type="radio"/> E <input type="radio"/> N	<input type="radio"/> 100*200 <input type="radio"/> 150*200
	<input checked="" type="radio"/> R	<input type="radio"/> 10 cm		<input type="radio"/> 2G	E	<input checked="" type="radio"/> 200*200 <input type="radio"/> 150*250
		<input type="radio"/> 12 cm				<input type="radio"/> 200*250 <input type="radio"/> 250*250
						<input type="radio"/> 200*300 <input type="radio"/> 250*300

S R - F7 - 3S - 1G E 200x200

Nomenclature Example for Sliding Doors

rime.

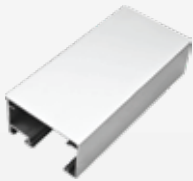
COLD ROOM HINGED DOOR

FOR CHILLER AND FREEZER



Gasket

Provides an airtight seal, enhancing energy efficiency and preventing temperature loss.



Aluminium Frame

Ensures structural integrity and durability, offering robust support for the door.

Aluminium Casing

Lightweight yet strong, offering superior insulation and resistance to corrosion.



Swing Door Hinge

Allows smooth operation and easy maintenance with heavy-duty performance.



Door Lock

Secures the door with precision, ensuring safety and reliability.



Insulated Panel

Superior insulation minimizes energy loss, enhancing thermal efficiency and maintaining consistent temperatures inside the cold room.

Hinged doors are a fitting choice for cold rooms designated for preservation at temperatures as low as +0°C for chilling and -20°C for freezing. Their versatility makes them an excellent addition to various commercial establishments, such as industrial facilities, supermarkets, hotels, and restaurants. These doors are the best in cold rooms where flexibility is vital, offering a compact, adaptable, and lightweight door solution.

Swing Door Hinge

Technical Specifications

Technical Specifications	Freezer Type	Chiller Type
Door Type	Manual operated Insulated Single Leaf Hinged Door	Manual operated Insulated Single Leaf Hinged Door
Construction	The door leaf is constructed of B1-classified Injected polyurethane foam insulation material with a 40kg/m ³ foam density. Covered on both sides with 0.5 mm PPGI steel flat sheet with polyester coating	The door leaf is constructed of B1-classified Injected polyurethane foam insulation material with a 40kg/m ³ foam density. Covered on both sides with 0.5 mm PPGI steel flat sheet with polyester coating
Thickness of Door Leaf	70 – 100 – 120 mm	70 – 100 – 120 mm
Application	Freezer storage (below zero degrees)	Chilled storage (above zero degrees)
R-value	Approx. 4.54 (m ² ·K/W).	Approx. 4.54 (m ² ·K/W).
Hinge	In composite material, low temperature and corrosion resistance. Adjustable in three directions. Theft-proof pin and tamper-proof fixing with door closed. Auto-lubricating hidden ramps	In composite material, low temperature and corrosion resistance. Adjustable in three directions. Theft-proof pin and tamper-proof fixing with the door closed. Auto-lubricating hidden ramps
Wall Frame	Anodized Aluminum Profiles with thermal brake to prevent heat bridges.	Anodized Aluminum Profiles with thermal brake to prevent heat bridges.
Door Frame	Anodized Aluminum Profiles with thermal brake to prevent heat bridges.	Anodized Aluminum Profiles with thermal brake to prevent heat bridges.
Color of Door Leaf	Ready to install White RAL 9016 Customizable RAL color options	Ready to install White RAL 9016 Customizable RAL color options
Sealing	Whole perimeter is sealed with rubber profiles.	Whole perimeter sealed by means of rubber profiles.
Door Heater	Included in the three sides of the door frames and on the bottom of the door leaf.	Included in the three sides of the door frames and on the bottom of the door leaf.
Door Closer	With heavy-duty door closer.	With heavy-duty door closer.
Key Lock	Supplied with key lock and internal safety release (push button).	Supplied with key lock and internal safety release (push button).

Hinged Door Accessories

Our Hinged Door Lock ensures secure access control, while the Swing Door Hinge Large Model enables smooth and precise door movement



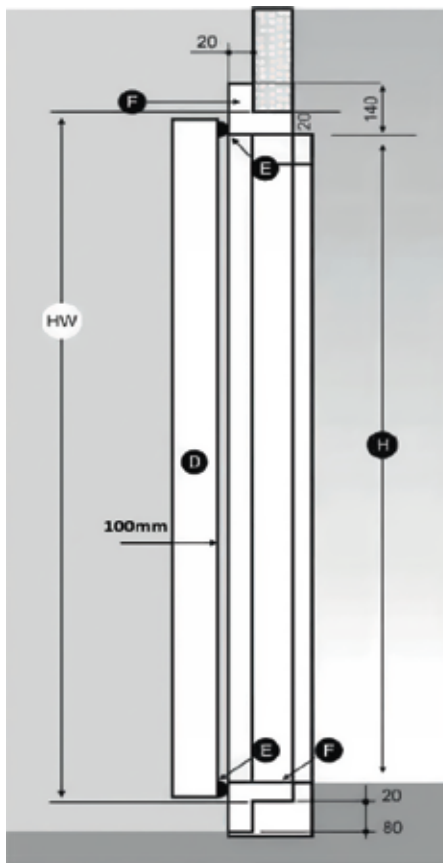
Hinged Door

General Fixing Details

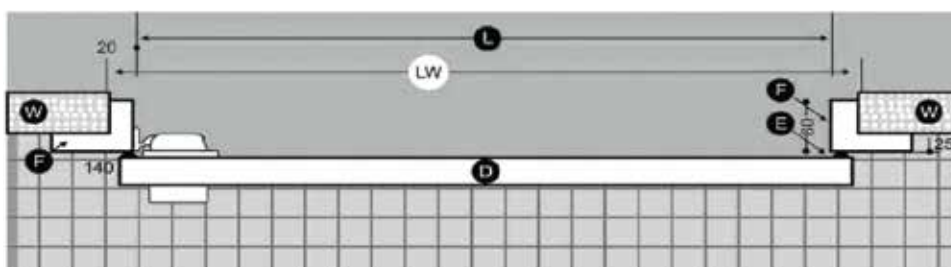
- ⓓ Door blad insulated by injected foam
- ⓔ Elastic rubber strips
- Ⓦ Wall
- ⓕ Frame with covering
- Ⓛ Clear opening horizontal
- ⓗ Clear opening vertical
- ⓁⓌ Wall opening horizontal
- ⓗⓌ Wall opening vertical



Vertical Fixing Details



Horizontal Fixing Details



rime.

COLD ROOM SLIDING DOOR

FOR CHILLER AND FREEZER



Sliding doors offer solutions for various temperature applications, from preservation at +0°C to freezing at -20°C and even extreme temperatures at -40°C in freezing tunnels. They are particularly well-suited for cold rooms and access points that demand larger openings. These doors are ideal for spaces with high traffic and where heavy-duty usage is expected, ensuring reliability and durability even in the most demanding environments.

Technical Specifications

Technical Specifications	Freezer Type	Chiller Type
Door Type	Manual operated Insulated Single Leaf Sliding Door	Manual operated Insulated Single Leaf Sliding Door
Construction	Door leaf constructed of B1 classified Injected polyurethane foam insulation material with foam density of 40kg/m ³ . Covered on both sides with 0.5 mm PPGI steel flat sheet with polyester coating.	Door leaf constructed of B1 classified Injected polyurethane foam insulation material with foam density of 40kg/m ³ . Covered on both sides with 0.5 mm PPGI steel flat sheet with polyester coating.
Thickness of Door Leaf	100 – 120 mm	100 – 120 mm
Application	Freezer storage (below zero degrees)	Chilled storage (above zero degrees)
R-value	Approx. 5.45 (m ² .K/W).	Approx. 5.45 (m ² .K/W).
Framing	Anodized aluminum profiles, thermal break to prevent heat bridges.	Anodized aluminum profiles, thermal break to prevent heat bridges.
Sealing	Whole perimeter is sealed with rubber profiles.	Whole perimeter is sealed with rubber profiles.
Rail System	Anodized aluminum drop/lift rail system type SRA with dust cap.	Anodized aluminum drop/lift rail system type SRA with dust cap.
Color of Door Leaf	Ready to install White RAL 9016 Customizable RAL color options	Ready to install White RAL 9016 Customizable RAL color options
Operation	Manual type.	Manual type.
Openers	Inside and outside opener.	Inside and outside opener.

Sliding Door Accessories

Enhance the functionality and convenience of your sliding doors with our range of high-quality accessories designed to optimize performance and user experience.



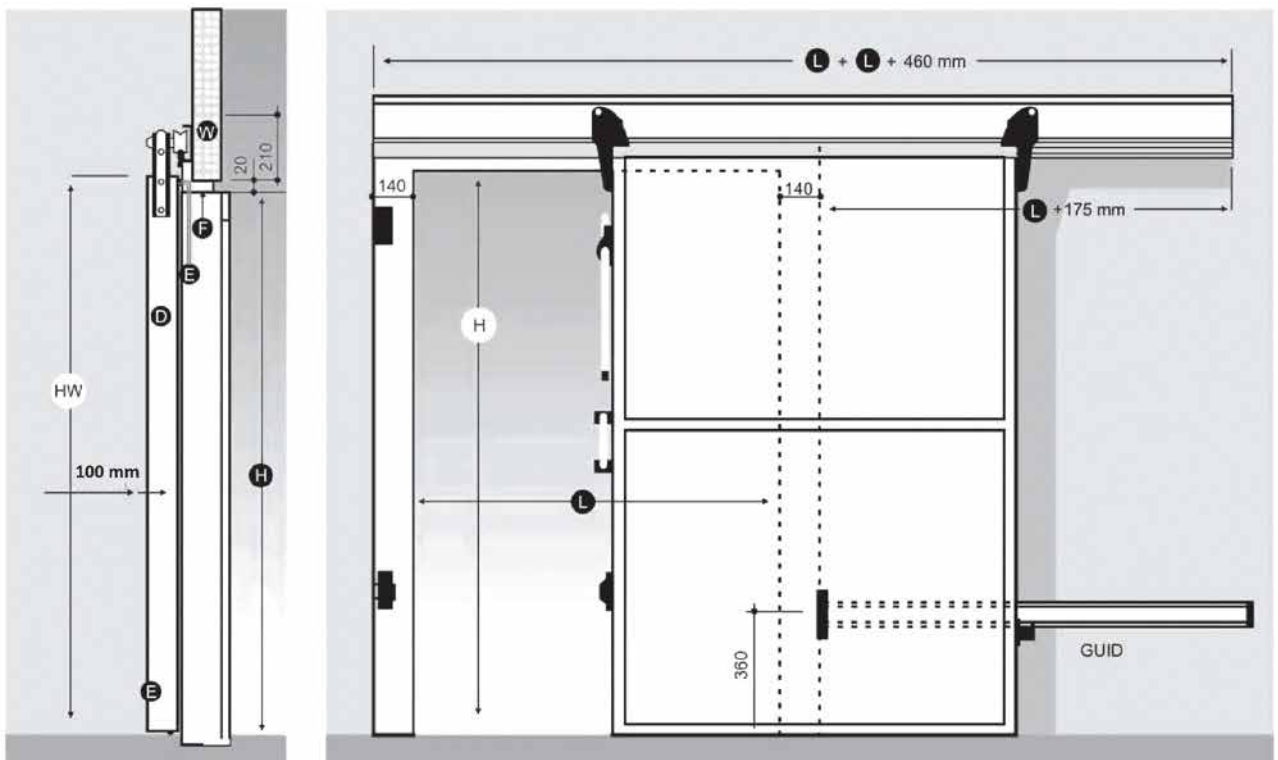
Sliding Door

General Fixing Details

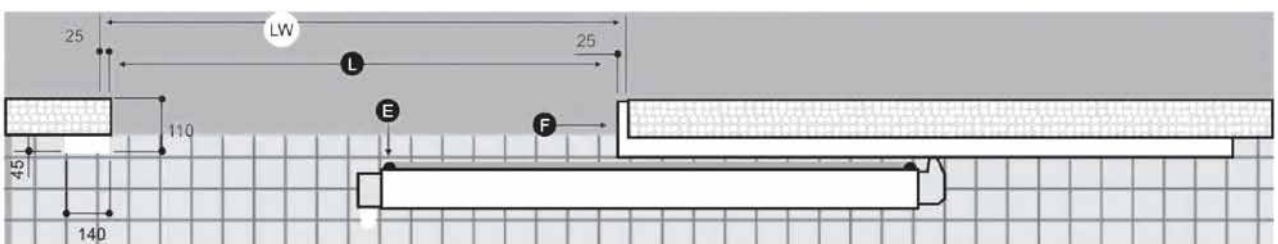
- D** Door blad insulated by injected foam
- E** Elastic rubber strips
- W** Wall
- F** Frame with covering
- L** Clear opening horizontal
- H** Clear opening vertical
- LW** Wall opening horizontal
- HW** Wall opening vertical



Vertical Fixing Details



Horizontal Fixing Details



Customized Door Options

Colors

Elevate your brand's identity with a wide array of RAL color options for our cold room doors, allowing you to choose the perfect hue that seamlessly aligns with your unique corporate image and style.

Standard colors in RAL



9010 Pure White



1018 Zinc Yellow



3000 Flame Red



6024 Traffic Green



5010 Gentian Blue



7035 Light Grey



7037 Dusty Grey



7024 Graphite Grey



8012 Red Brown



7026 Granite Grey

Special color options in RAL



3020 Traffic Red



5017 Traffic Blue



2009 Traffic Orange



1003 Signal Yellow



5015 Sky Blue



5022 Night Blue



8017 Chocolate Brown

*Note that minimum quantities and prices will be provided only upon request. We offer all RAL colors as per your requirements. Color deviations from the RAL scale are due to the printing process.

Tailored Solutions and Ordering Flexibility for rime Cold Room Doors

Lead Time Flexibility: We understand the importance of timely project execution. Our cold room doors are available for big orders and customized requirements, and we adjust lead times accordingly to ensure your projects stay on schedule.

Varied Pricing: The pricing of our cold room doors is versatile. Large orders can benefit from competitive prices, while customized features or unique specifications may influence the cost. We offer tailored pricing structures to accommodate your specific needs.

Minimum Order Quantity (MOQ): We have established a minimum quantity for particular doors featuring unique colors or configurations. This requirement helps us maintain efficiency in production and cost-effectiveness while meeting your demands for customized designs. It ensures you can enjoy the benefits of tailored solutions without compromising efficiency or cost.



Quality

Crafted, manufactured, and assembled by our expert in-house team, Rime Group ensures unwavering reliability, safety, and enduring durability in each and every product, a hallmark of our commitment to excellence.



Delivery

At Rime, we have 20+ years of experience making and delivering cold room doors to the Middle East and Africa. Our logistics team ensures reliable and timely delivery by handling export documentation, careful loading, and secure transportation.



Installation

Installed by our skilled in-house team, Rime Group ensures precise, expert installation of cold room doors, guaranteeing a seamless fit, uncompromising safety, and enduring performance.



Maintenance

Our skilled technicians at Rime offer comprehensive maintenance services for your cold room doors to prevent breakdowns and extend their lifespan. Consider our Annual Maintenance Contracts (AMCs) for convenience and peace of mind.

Warehouse

With strategically located branches and a warehouse facility, Rime provides easy access to a diverse range of insulation and refrigeration products right at your doorstep, saving you valuable time. Our efficient distribution system ensures timely deliveries, streamlining your operations and ensuring uninterrupted service. Experience the convenience and reliability of Rime!

Rime Assembly Units

Located in UAE: Rime crafts cold room doors with precision. Focusing on quality, accuracy, and energy efficiency, we transform these components into complete, high-performance cold room solutions.

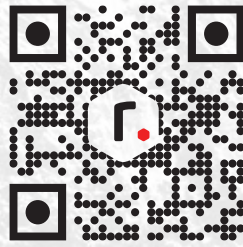


Market Presence

Rime has established a prominent presence in the Middle East and African markets by offering exceptional refrigeration solutions to a diverse clientele. Our services cater to organizations of all sizes, from small businesses to multinational corporations. Our noteworthy market share is a testament to our unwavering commitment to providing reliable and innovative solutions to various industries.

rime.

ENGINEERED TO ENDURE
MANUFACTURED FOR SUCCESS



www.rimegroup.com

Contact Us

For inquiries, consultations, or to learn more about our innovative refrigeration solutions, please get in touch with us:

sales@rimegroup.com

For customer support email us:

support@rimegroup.com