

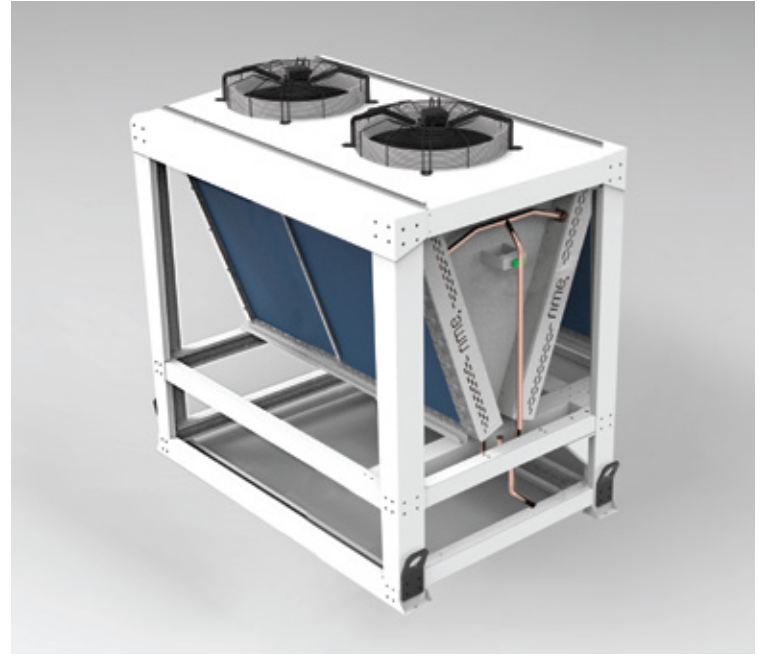
# AIR COOLED V-TYPE CONDENSER

Model: RVC 263-100



## GENERAL INFORMATION

Parameter	Unit	Value
Air inlet temperature	°C	35
Condensing temperature	°C	50
Inlet superheat	°C	40
Subcooling	°C	0
Refrigerant	–	R404a
Altitude	m	0
Type	–	V-type
Power supply	–	380-420V/3Ph/50Hz
Capacity	kW	103
Air flow @ 0 Pa	m <sup>3</sup> /h	29,000
Power consumption	W	3,400
Motor consumption	A	6
Fan speed	1/min	1,400



## FAN INFORMATION

Parameter	Unit	Value
Fans	mm	2 x 630
Poles	n	4
Volume	L	41
Surface	m <sup>2</sup>	317
Sound level (at 10 m)	dB(A)	59
Sound power level	dB(A)	90

## DIMENSION AND MECHANICAL DATA

Parameter	Unit	Value
Weight	kg	560
Inlet connections	n x in	1 x 1 1/8"
Outlet connections	n x in	1 x 7/8"
Circuit	n	2 x 22
Overall dimensions (LxWxH)	mm	2,270 x 1,240 x 1,820

## MATERIALS

Component	Material
Casing material	Powdered Coated (GS)
Headers material	Copper / Steel
Fin material	Epoxy Coated Aluminium
Tube material	Copper

The **rime V-Type Condenser** is engineered for maximum flexibility, durability, and system compatibility across a wide range of industrial and commercial refrigeration applications. Inlet and outlet connections can be configured for dual or triple condenser operation within rack systems, depending on fan quantity and circuiting requirements. A liquid receiver can also be mounted directly on the condenser chassis when requested, enabling a compact and fully integrated installation.

Optional safety valves can be incorporated on the discharge header to provide reliable overpressure protection. A dedicated electrical control box is available on request, offering intelligent fan management through discharge pressure monitoring for optimized energy efficiency and stable performance under varying load conditions.



*rime provides a comprehensive range of engineering customization capabilities to meet specific project and operational requirements. Each unit can be precisely configured in terms of mechanical design, component selection, and control integration to ensure maximum system compatibility, enhanced performance, and long-term operational reliability.*



CONTACT  
SALES@RIMEGROUP.COM  
+971 4 4918522

RIME GROUP FZE  
Plot No. M00535 North Zone JAFZA, Dubai, UAE  
P.O Box 26820 | www.rimegroup.com